

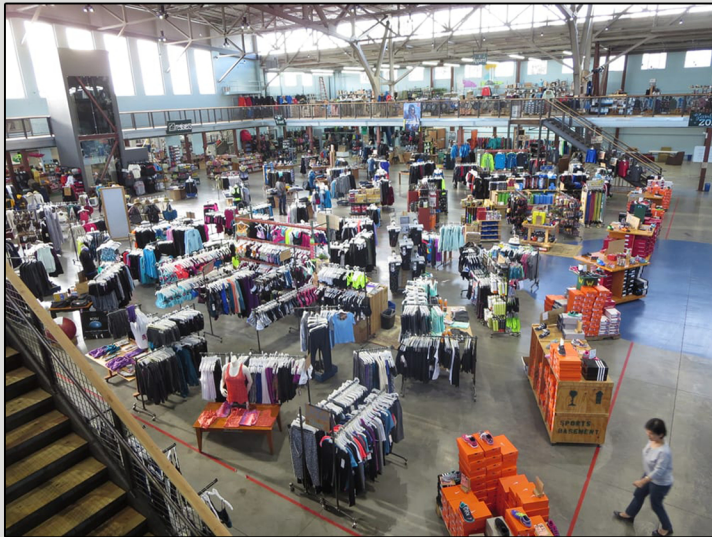


TENANT REQUIREMENTS

40,000 SF to 100,000 SF

\$80,000+ Median Household Incomes

Seeking freestanding buildings with significant parking and strong cotenants



Sports Basement is a sporting-goods retailer with six locations in the San Francisco Bay Area. We take pride in selling the best brands at basement prices.

We have great prices, but everything is top quality. Our stores are huge, but they feel and act like small shops. We make all of our signs, racks, fixtures and displays by hand in our wood and metal shop.

We are a community center, a hangout, a hub. Our stores are like a second home to local athletes and groups who use our space daily for club meetings, to host potlucks, to start a workout from our front doors, or to pick up some tips at a speaker series event.

Our employees are local coaches, instructors, outdoor enthusiasts, teachers, students. We are all active in the community and in our sports and activities. We use the product we sell.

For more information or to submit a site, please contact:

Steve Cutter

(650) 548-2672

SCUTTER@LOCKEHOUSE.COM

License #01267591

LOCKEHOUSE



477 9th Avenue, Suite 100, San Mateo, CA 94402 - License #01784084

www.LOCKEHOUSE.com